

Since 1940

WISCONSIN ENERGY *Cooperative*

June 2025

NEWS



**Richland Electric
Cooperative**

Your Touchstone Energy® Cooperative

RURAL POLICY FOR WISCONSIN'S FUTURE

PREVENTING WILDFIRES

EFFICIENCY TIPS FOR NEW HOMES

JUNE DAIRY RECIPES

SUMMER SAVINGS

WE ARE HERE TO HELP



MY CO-OP



**Richland Electric
Cooperative**

Your Touchstone Energy Cooperative



When summer heats up, our electric bills tend to increase as air conditioners are working overtime, driving up home energy consumption. Richland Electric Cooperative is your local not-for-profit electricity provider, and we are committed to helping you beat the heat without breaking the bank. As the temperatures get hotter over the next few months, we want to make sure you know about a range of energy-saving offerings designed specifically with you in mind. By taking advantage of these programs and services, you can manage your summer energy consumption and costs.

Rebate Program

When you make upgrades or purchases to reduce home energy use, those smart decisions should be rewarded. REC offers rebates on energy-efficient appliances, heating and cooling equipment, and more. Visit <https://rec.coop/rebates> to learn about our rebate program and how you can receive a bill credit for making smart energy choices.

Home Energy Audit

Richland Electric Cooperative partners with *Focus on Energy* advisors to conduct energy audits of your home to identify areas where energy is wasted and provide recommendations on ways to improve efficiency and lower your monthly bills. Visit <https://rec.coop/focus-energy> for more information.

Remember, You Have the Power

The best way to lower energy use during summer months is to raise the thermostat to the highest setting that's comfortable and close blinds and shades on sunny days to block excess heat. Ceiling fans can also help you feel cooler, but remember to turn them off when you leave the room. Staying on the lowest floor of your home will also help you beat the heat on those hot summer days.

Implement These Smart Tips

Run dryers, washers and dishwashers early in the morning or late in the evening. Wash full loads of laundry in cold water. Clean the dryer's lint trap after every laundry load, and air-dry clothes when possible.

Don't let energy bills take a toll on your summer fun! Richland Electric Cooperative is here to help you manage your energy use, whether through efficiency programs and services or energy-saving advice. Call us at 608-647-3173 or visit our website at <https://rec.coop> and let us help you beat the summer heat!



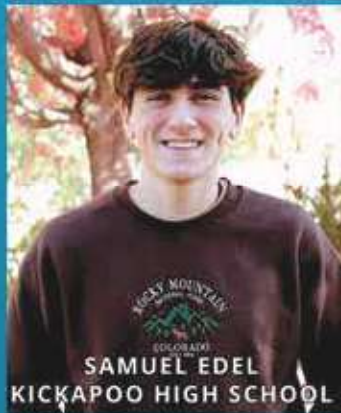
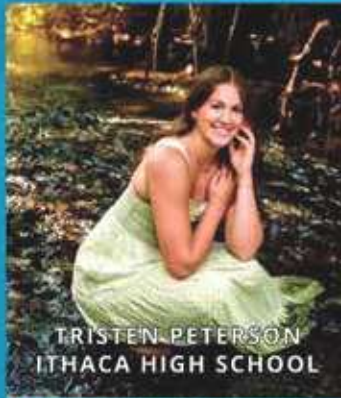
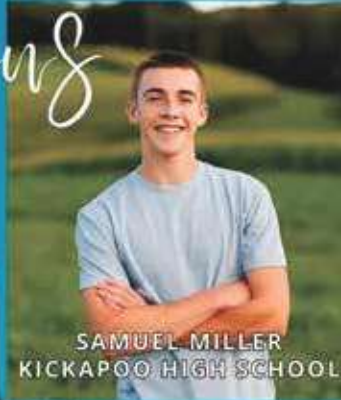
WAYS TO PREPARE YOUR HOME FOR *Summer Vacation*

- Program your thermostat to 85 degrees.
- Unplug small appliances and electronics.
- Make sure your sump pump is working.
- Use light timers or smart lighting.
- Make sure doors and windows are locked.
- Clean out your refrigerator.
- Pause your mail.

Safe
Electricity.org

Congratulations

RICHLAND ELECTRIC SCHOLARSHIP WINNERS



HIGH VOLTAGE IMPACT:



MY CO-OP

Electrifying Demonstrations that Give Back to the Community

In a demonstration of skill and safety, Grant Worthington and Grant Butcher, both Journeyman Lineman from Richland Electric Cooperative, traveled to local schools performing high voltage safety demos for students. The event is designed to provide an up-close look at the work of electrical linemen while teaching critical safety lessons. The students, who ranged from third grade to high school seniors, were given an exclusive look at the dangers electricity can pose.

The demonstration reviews high voltage safety protocols. The linemen explain the importance of safety equipment such as rubber gloves, insulated tools, and harnesses for themselves. Additionally, one of the most critical aspects demonstrated, was the safety measures that members of the community can take when dealing with electrical lines that are still energized. With real-time explanations, students learned about the difference between low and high voltage, the potential hazards of each, and the types of protective measures needed to prevent accidents.

This high voltage demonstration wasn't just about showcasing the linemen's technical abilities; it was also about giving back to the community. By reaching out to local schools, the linemen were able to help students gain a better understanding of the vital services they provide and the safety precautions necessary when dealing with electricity.

Riverdale
Elementary School
Principal Sarah
Ploeckelman
with REC
employees



Riverdale
student Piper
with REC Lineman
Grant Butcher



Richland Center
student Morgan
takes a moment to
pose with her Dad,
REC employee Grant
Worthington



Engaging Students in Hands-On Learning

A Career Fair Introduction to Working at a Cooperative

The Riverdale School District Career Fair kicked off, and Richland Electric Cooperative was excited to be a part of it this year. Curt Brockway, Line Superintendent and Journeyman Lineman; Grant Worthington, Journeyman Lineman; and Nicole Prochaska, Operations Assistant, spent time talking to the students about potential careers within an electric cooperative, discussing their roles in detail to the students that came to their booth. They provided a brief overview of the essential role linemen play in our daily lives. From maintaining power lines to ensuring the stability of the electrical grid, linemen work tirelessly behind the scenes to keep homes, businesses, and critical infrastructure powered. However, their work isn't without risks—working with high voltage lines can be dangerous.

The demonstration aimed to give students an understanding of what linemen face daily and how they keep themselves safe while working with electricity.

To make the event even more interactive, students were given the chance to try out some basic safety gear and tools used by linemen. Wearing insulated gloves and handling mock tools, they experienced a small taste of the responsibility linemen carry with them daily. While no one was asked to work with live power, it was a valuable educational experience that students won't soon forget.


For many of the students, this event opened their eyes to a potential career they may not have previously considered. Curt, Grant, and Nicole discussed local apprenticeship programs and provided handouts for interested students who wanted to take the time to learn more. The event emphasized the importance of technical skills, safety training, and teamwork—essential elements in the lineman profession.

With some assistance from Curt Brockway and Grant Worthington, Riverdale High School students take an opportunity to try out equipment utilized by linemen.



Amy Martin, Manager/CEO


30 E. Robb Rd., P.O. Box 439, Richland Center, WI 53581
608-647-3173

www.rec.coop • Find us on Facebook 

Trina Duffy-Brauer, Editor



**Richland Electric
Cooperative**

Your Touchstone Energy® Cooperative 

Board of Directors

Calvin Sebranek, President • Daniel Hillberry, Vice President • Judy Murphy, Secretary • Tim Tiller, Treasurer
Denise Brown, Jim Goplin, Steven Fuller, Jeff Monson, Kevin Kepler